



# FLOWER POTS

WITH SUB-IRRIGATION





FLOWER LOVER

# UNIQUE EQUIPMENT FOR PLANT

|  |    |
|--|----|
| <b>CORPORATE STRATEGY, HISTORY</b> ..... | 4  |
| <b>SUB-IRRIGATION SYSTEM</b> .....       | 6  |
| <b>NEW PRODUCTS</b> .....                | 14 |
| CUBICO STONE .....                       | 16 |
| DELTO STONE .....                        | 20 |
| SUPREME STONE .....                      | 24 |
| RONDO STONE .....                        | 28 |
| QUADRATO MATT .....                      | 34 |
| <b>PRODUCTS</b> .....                    | 40 |
| COBBLE .....                             | 42 |
| SUPREME EMBLEM .....                     | 46 |
| MUNGO .....                              | 50 |
| LARGO TRIO .....                         | 54 |
| CUBICO .....                             | 58 |
| QUADRATO .....                           | 62 |
| <b>POINT OF SALE DISPLAYS</b> .....      | 66 |
| <b>LOGISTICS OVERVIEW</b> .....          | 70 |
| <b>CONTACTS</b> .....                    | 74 |





FLOWER LOVER

# WE LOVE

## **We love design**

Simply clever lines. Stylish highgloss metallic surface.

## **We love plastic**

UV resistant, weather-proof, lightweight yet durable. Plastic yet lovable!

## **We love to play**

Combine diverse shapes and sizes to make unique sets. Go crazy!

## **We love space**

Outside or the inside. Patio, shelf or bathroom floor. Table, window or as a lovely gift. Nothing is impossible!

## **We love to grow**

Years of experience led to the development of Flower Lover integrated sub-irrigation system. Balanced technically to suit most plants. Integrated aesthetically to please your heart.

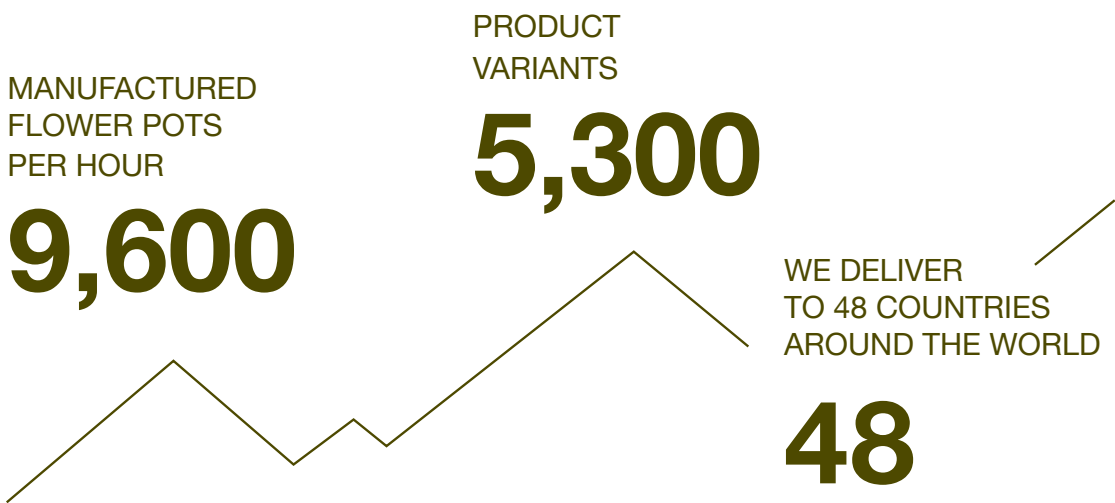




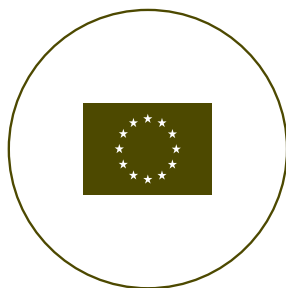
FLOWER LOVER

# YOUR SUCCESS IS OUR GOAL

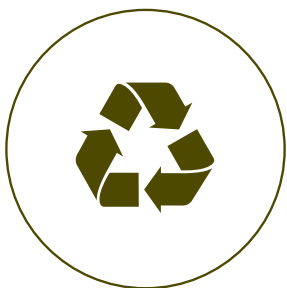
We are a family enterprise with a long tradition. We have an understanding for our customers. We look for solutions and do not hide from problems. You will not find any corporate structure with us.



We want to inspire you and support your sales both with marketing tools and analyses and support at the point of sale.



Our manufacturing is in the EU



All our flower pots are 100% recyclable



73 % of our employees are women

“In Plastkon, we do not compromise between quality, experience and design. It is also really important to us to have a professional and reliable business relationship with all our clients.”

**David Hama**  
Managing Director



We are always fair! We aim to build long-term relationships and develop joint business.



We are a Czech company, so we can offer you convenient delivery conditions and react flexibly to your individual requirements.



We occupy a stable second place on the European market in premium functional plastic flower pots.

FLOWER LOVER

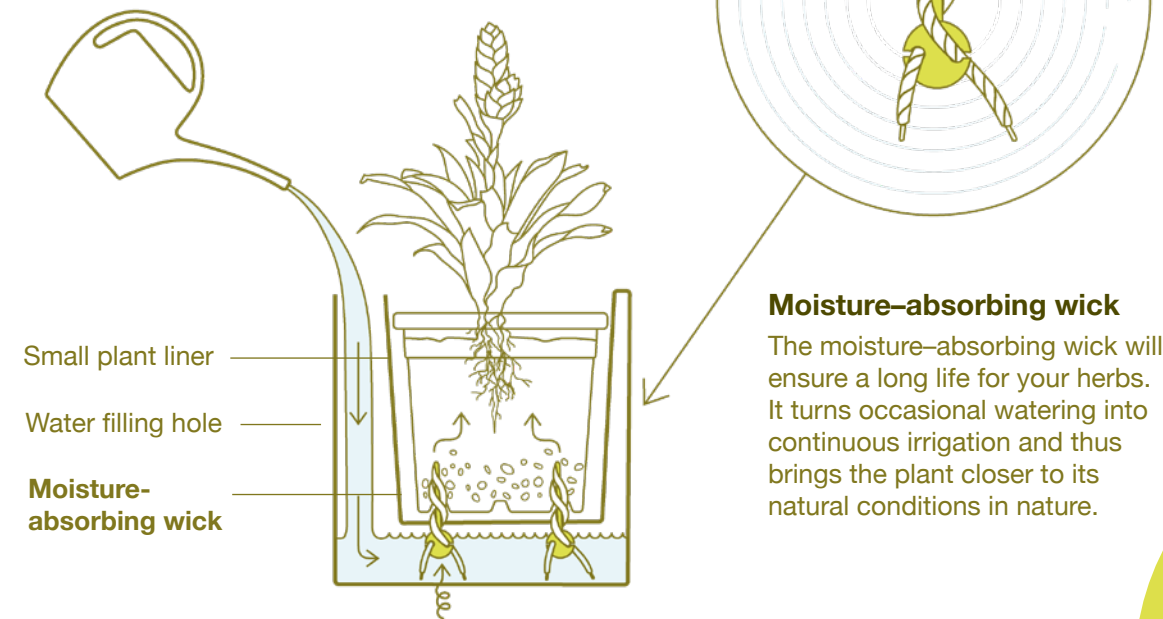
# SELF-WATERING SYSTEM

Our wide range of flower pots offer both interior and exterior solutions for your plants. Each product ensures maximum care for your plants thanks to the unique and accurate self-watering system. Last but not least, the great design of our products will enliven your apartment and garden.



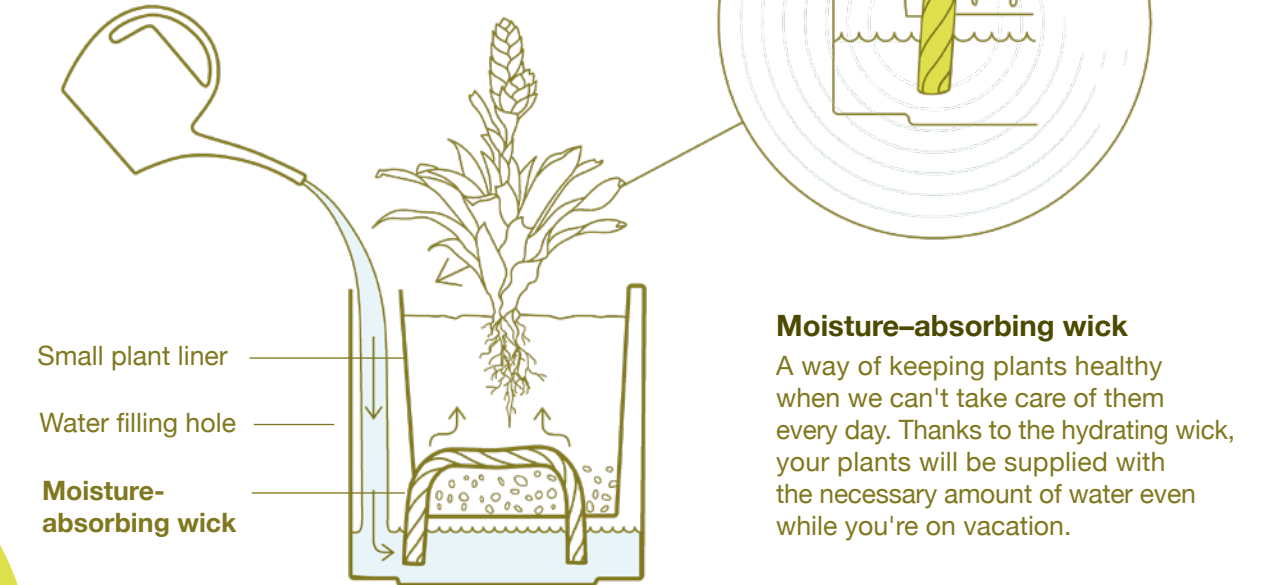
# Twist Liner

\*Cobble



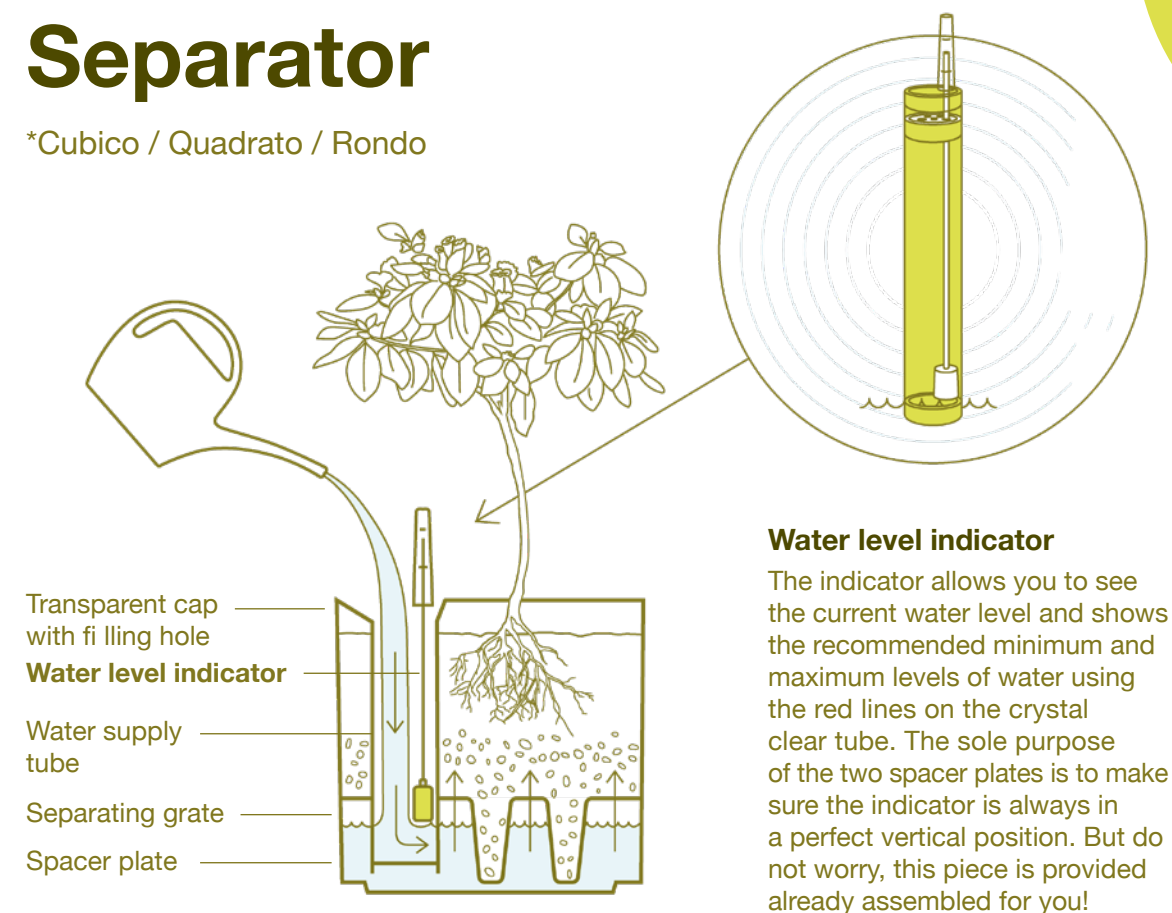
# Small Liner

\*Cubico Small



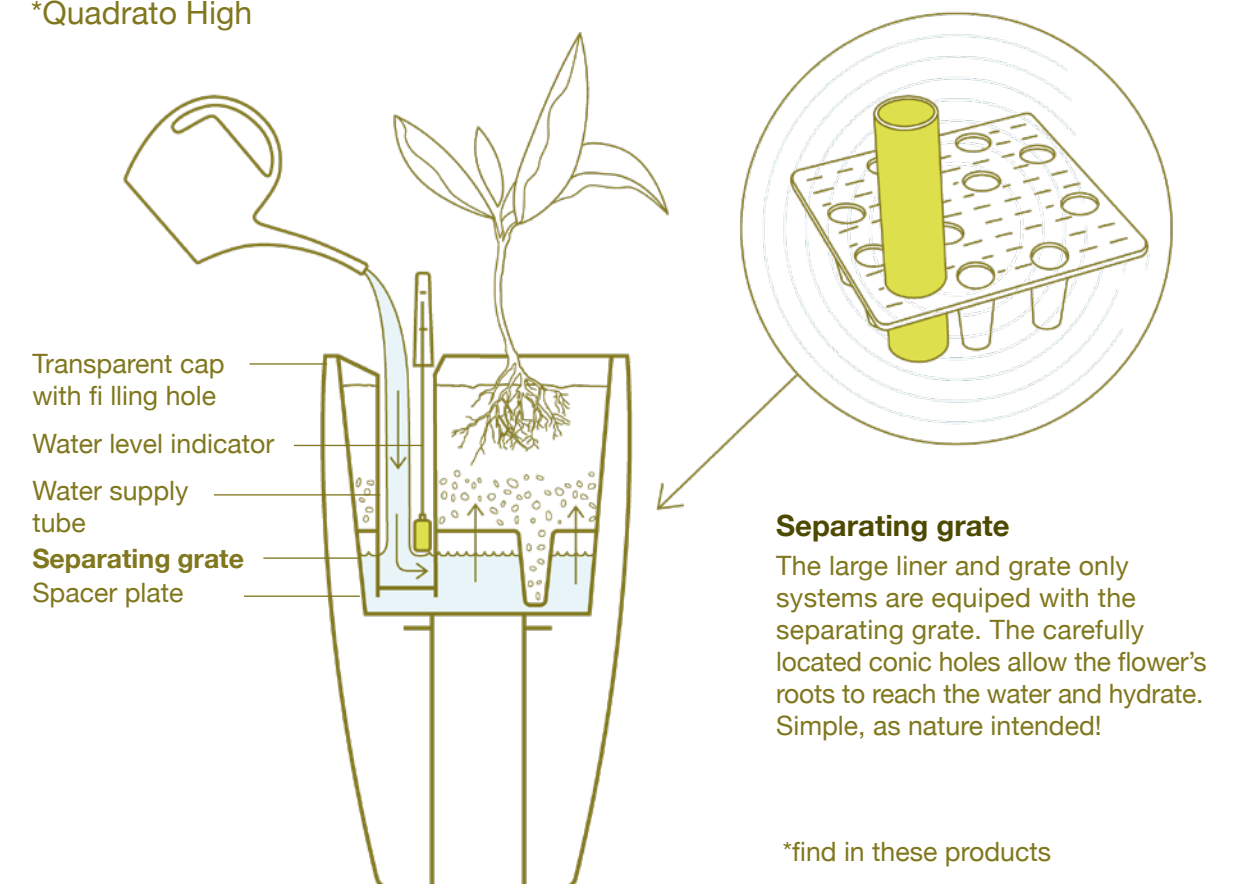
# Separator

\*Cubico / Quadrato / Rondo



# Large liner

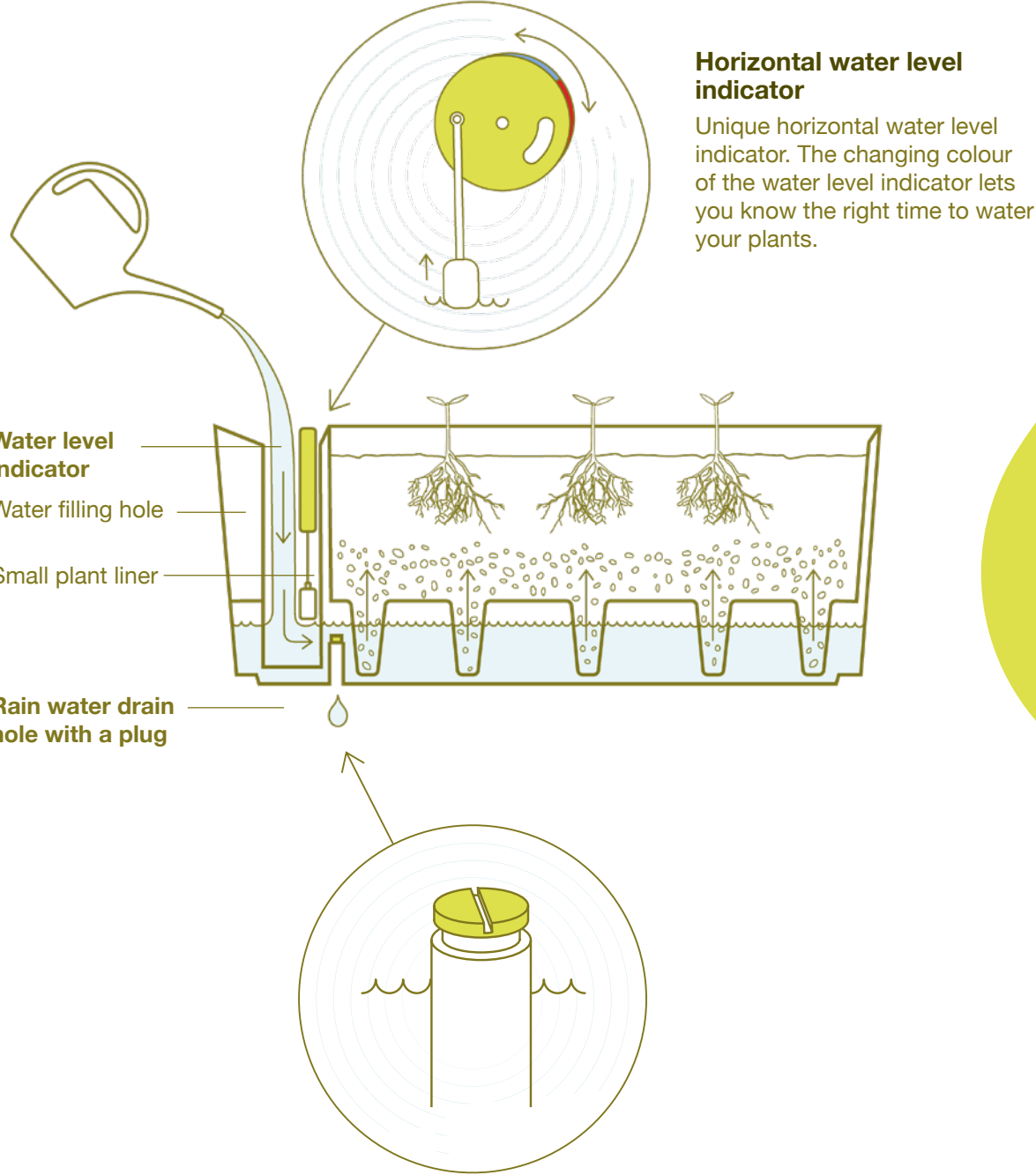
\*Quadrato High



\*find in these products

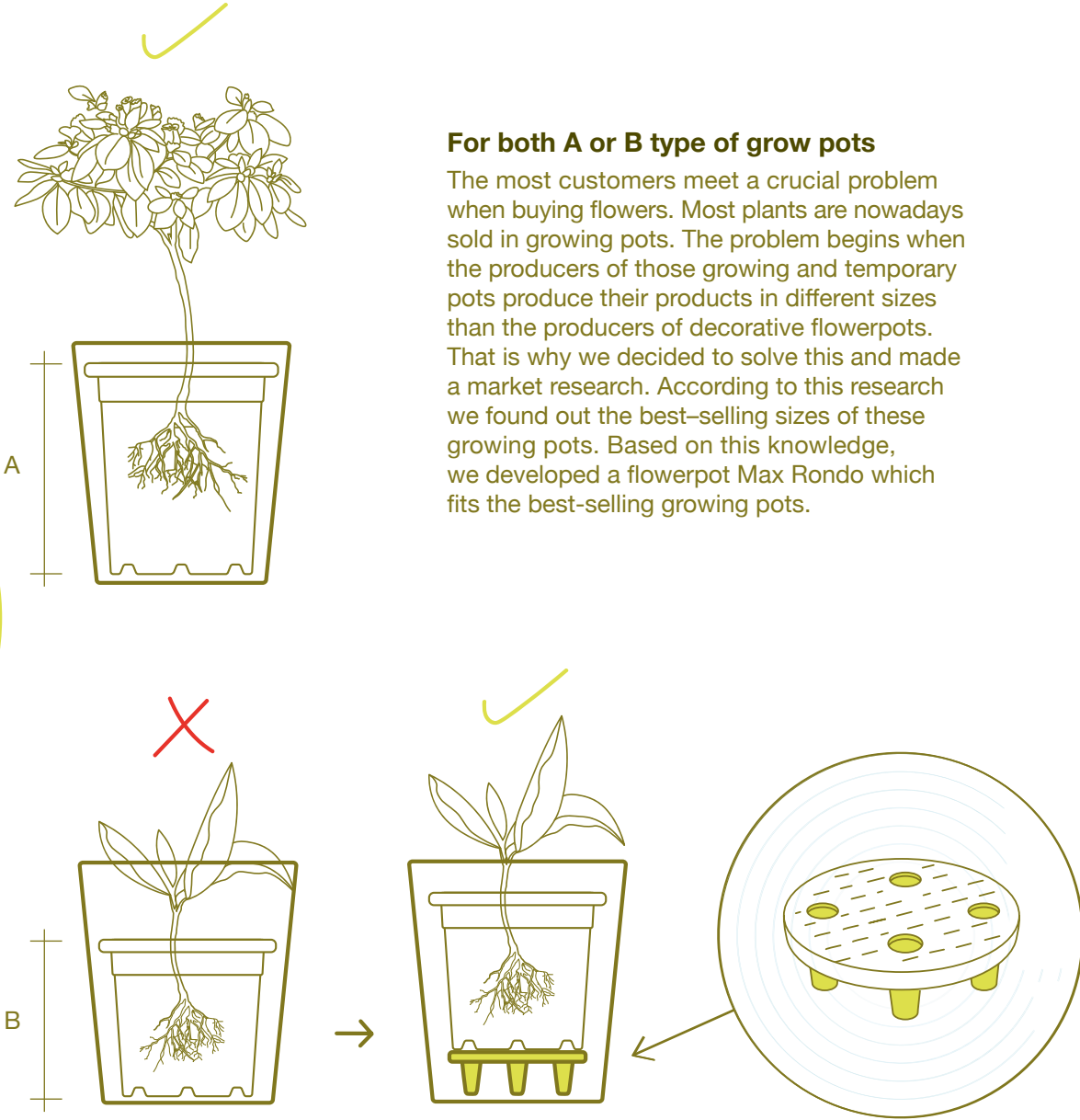
# Hydro power

\*Supreme



# Variable

\*Rondo







Delto Stone is synonymous with perfect proportions and finely sharp edges, making it a great addition to any household with a wide range of uses, available in 4 different sizes and 3 colors.



FLOWER LOVER

# NEW PRODUCTS





FLOWER LOVER

# CUBICO STONE

Perfect proportions allowing a wide range of uses. The beauty of CUBICO STONE is magnified by replicating a natural stone texture that offers an added value and an original twist on a classic design, which you won't find amongst the competition. The pot includes a drain valve and is therefore designed for both indoor and outdoor use. The sub-irrigation set includes a pot, a grate that separates the soil from the water reservoir, and a filling tube with a level indicator.





# Colours, sizes and sub-irrigation variations

## colors / materials

007   010   128



## Stone Surface



## sizes

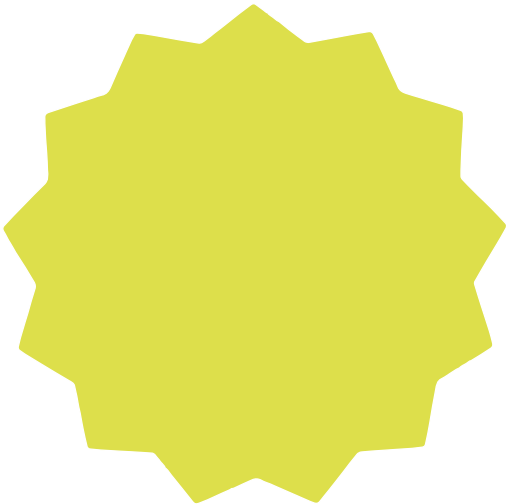
Dimensions:  
27 × 27 × 27 cm  
Water: 4 L  
Soil: 14 L



Dimensions:  
33 × 33 × 33 cm  
Water: 7 L  
Soil: 33 L



Dimensions:  
27 × 27 × 42 cm  
Water: 6 L  
Soil: 12 L



## sub-irrigation set with planter



- indoor/  
outdoor
- high volume  
(without sub-  
irrigation)
- variability
- rain water  
drain hole
- weather  
resistant





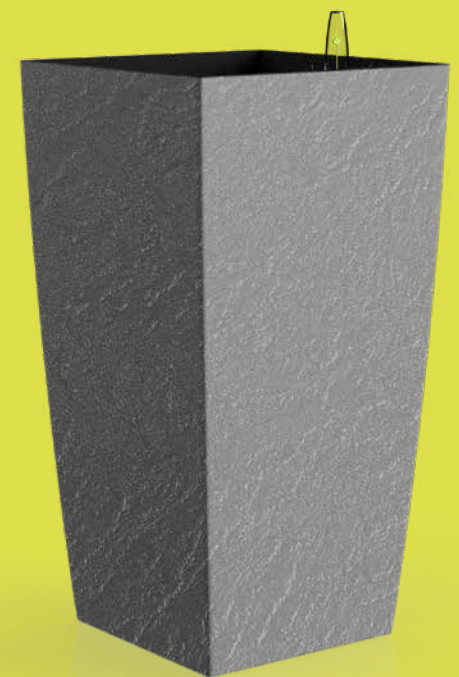


FLOWER LOVER

# DELTO STONE

Delto Stone is synonymous with perfect proportions and finely sharp edges, making it a great addition to any household with a wide range of uses, available in 4 different sizes and 3 colors.

Unique shape with elegant soft curves. The beauty of DELTO STONE is magnified by replicating a natural stone texture that offers an added value and an original twist on a classic design, which you won't find amongst the competition. The pot includes a drain valve and is therefore designed for both indoor and outdoor use. The sub-irrigation set includes a pot, a grate that separates the soil from the water reservoir, and a filling tube with a level indicator.





# Colours, sizes and sub-irrigation variations

## colors / materials

007 010 128



Stone Surface



## sizes

Dimensions:  
25 × 25 × 25 cm  
Water: 1,2 L  
Soil: 4 L



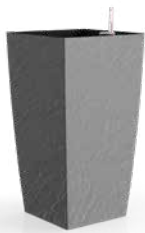
Dimensions:  
30 × 30 × 30 cm  
Water: 1,6 L  
Soil: 24 L



Dimensions:  
25 × 25 × 46 cm  
Water: 2,2 L  
Soil: 8,1 L



Dimensions:  
30 × 30 × 46 cm  
Water: 3,2 L  
Soil: 11,1 L



sub-irrigation set  
with planter



# Properties

stone surface



indoor/  
outdoor



high volume  
(without sub-  
irrigation)



variability



rain water  
drain hole



weather  
resistant







FLOWER LOVER

# SUPREME STONE

Supreme Stone is based on our Supreme Emblem, which was developed with a removable inner containers that you just pull out by the handles, take to the garden and repot. It contains a horizontal and fully integrated Hydro Power self-watering system, which shows the water level and lets you know when to water the flower with the help of a float and the subsequent colourchange from orange to green

Supreme Stone is unique in its textured natural stone surface, which adds depth and interesting added value not found in competing brands.

Supreme is adapted for both indoor and outdoor use, where you only need to open the drainage hole to drain excess rainwater.





# Colours, sizes and sub-irrigation variations

## colors / materials

007 128 050



## sizes

Dimensions:  
49,5 × 19 × 19 cm  
Water: 3 L  
Soil: 7 L



Dimensions:  
74,5 × 19 × 19 cm  
Water: 5 L  
Soil: 11 L



## sub-irrigation system

Hydro power

sub-irrigation set  
with planter



Stone Surface



# Properties

modified base for  
mounting holders



convenient water  
filling



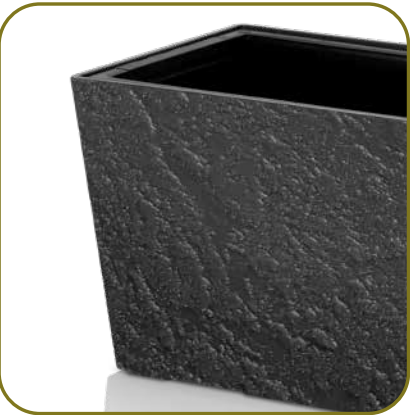
the planters are removable for  
comfortable planting



easy cleaning



stone surface



indoor/  
outdoor



removable  
planters for  
easy planting



easy  
manipulation



weather  
resistant



no mess



rain water  
drain hole







FLOWER LOVER

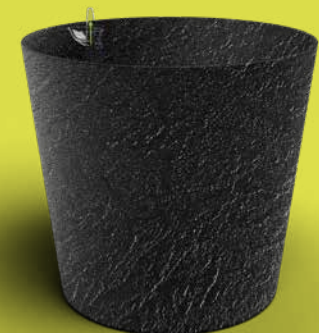
# RONDO STONE

## RONDO STONE

We performed a market analysis, during which we found the best-selling sizes of container pots and according to the data, we designed and developed a decorative pot that is compatible with container pots. So the only thing the customer has to do is to buy a plant, bring it home and just put it in our RONDO STONE. From time to time, the container pot is lower. In such a case just use the enclosed dividing grate and even a lower flower pot fits perfectly. The beauty of RONDO STONE is magnified by replicating a natural stone texture that offers an added value and an original twist on a classic design, which you won't find amongst the competition.

## RONDO STONE SEPARATOR

For demanding customers who enjoy repotting their plants, we have designed the self-watering system Separator. It is included in the package and complements the flower pot's design with its timelessly shaped cap, which shows the water level using a green stick.





# Colours, sizes and sub-irrigation variations

## colors / materials

007 128 050



Stone Surface



## sizes

### RONDO STONE (without SI)

Dimensions:  
32,6 × 32,6 × 32 cm  
Soil: 20 L

Dimensions:  
35,6 × 35,6 × 34 cm  
Soil: 24 L

Dimensions:  
40 × 40 × 37 cm  
Soil: 30 L



### RONDO STONE SEPARATOR

Dimensions:  
32,6 × 32,6 × 32 cm  
Water: 2 L  
Soil: 18 L

Dimensions:  
35,6 × 35,6 × 34 cm  
Water: 3 L  
Soil: 21 L

Dimensions:  
40 × 40 × 37 cm  
Water: 4 L  
Soil: 26 L



## sub-irrigation system

Separator

Variable\*

bez (SZ) systému

\*without sub-irrigation



# Properties

rain water drain hole  
with a plug



even for large plants



easy to move and  
spin using rollers



indoor/  
outdoor



comfort  
design



easy  
manipulation



weather  
resistant



no mess



twist  
and roll



high volume  
(without sub-  
irrigation)



rain water  
drain hole



for different  
sizes







Rondo Stone is designed to fit the majority of planting containers to save you the time of re-planting. Its proportions are ideal for bigger plants, therefore we included wheels in the smart design for comfortable and easy manipulation.





FLOWER LOVER

# QUADRATO MATT

The simple and delicate shapes will beautifully complement your interior. Its design provides a large volume for the plant while saving space. These pots come in a matt finish. It does not have a drain valve and is therefore primarily intended for indoor use. The set includes a decorative pot and a self-watering set including a separator that separates the soil from the water tank, a filling tube and a water level indicator.

## QUADRATO EASY MATT

These pots come in a matt finish. They do not have a drainage valve and are therefore primarily intended for indoor use. The self-watering set is not included. It can be purchased separately as an accessory.





# Colours, sizes and sub-irrigation variations

## colors / materials

### QUADRATO



## sizes

### QUADRATO MATT

|  |  |  |   |
|--|--|--|---|
| Dimensions:<br>18 × 18 × 17 cm<br>Water: 1 L<br>Soil 3 L | Dimensions:<br>25 × 25 × 24 cm<br>Water: 2 L<br>Soil 7,8 L | Dimensions:<br>22 × 22 × 21 cm<br>Water: 1,7 L<br>Soil 5,4 L | Dimensions:<br>34 × 34 × 32 cm<br>Water: 4,1 L<br>Soil 23,9 L |
|--|--|--|---|

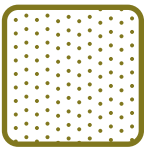


### QUADRATO EASY MATT

|   |  |  |  |
|---|--|--|--|
| Dimensions:<br>18 × 18 × 17 cm<br>Soil 3,25 L | Dimensions:<br>22 × 22 × 21 cm<br>Soil: 7,25 L | Dimensions:<br>25 × 25 × 24 cm<br>Soil 7,8 L | Dimensions:<br>34 × 34 × 32 cm<br>Soil: 26 L |
|---|--|--|--|



dull



# Properties

convenient water filling



glossy design



## sub-irrigation system

### QUADRATO

Separator

Separator High

### QUADRATO EASY

Without  
sub-irrigation

## accessories

self-watering  
system



indoor



comfort  
design



easy  
manipulation



high volume  
(without sub-  
irrigation)





| Product       | Color | Name                    | Art. No. | Dimensions (cm)    |
|---------------|-------|-------------------------|----------|--------------------|
| CUBICO STONE  |       | Cubico Stone 27 cm      | 4111774  | 27 x27 x 27        |
|               |       | Cubico Stone 33 cm      | 4111775  | 33 x 33 x 33       |
|               |       | Cubico Stone 27 x 42 cm | 4111776  | 27 x 27 x 42       |
| DELTO STONE   |       | Delto stone 25 x 25 cm  | 4111789  | 25 x 25 x 25       |
|               |       | Delto stone 30 x 30 cm  | 4111791  | 30 x 30 x 30       |
|               |       | Delto stone 25 x 46 cm  | 4111790  | 25 x 25 x 46       |
|               |       | Delto stone 30 x 58 cm  | 4111792  | 30 x 30 x 46       |
| SUPREME STONE |       | Supreme Stone 50 cm     | 4111128  | 49,5 x 19 x 19     |
|               |       | Supreme Stone 70 cm     | 4111129  | 74,5 x 19 x 19     |
| RONDO STONE   |       | Rondo Stone Separator   | 4114032  | 32,6 x 32,6 x 31,6 |
|               |       |                         | 4114033  | 35,6 x 35,6 x 34   |
|               |       |                         | 4114034  | 40 x 40 x 37       |
|               |       | Rondo Stone             | 4114059  | 32,6 x 32,6 x 31,6 |
|               |       |                         | 4114060  | 35,6 x 35,6 x 34   |
|               |       |                         | 4114061  | 40 x 40 x 37       |
| QUADRATO MATT |       | Quadrato Matt 18 cm     | 4111770  | 18 x 18 x 17       |
|               |       | Quadrato Matt 22 cm     | 4111771  | 22 x 22 x 21       |
|               |       | Quadrato Matt 25 cm     | 4111772  | 25 x 25 x 24       |
|               |       | Quadrato Matt 34 cm     | 4111773  | 34 x 34 x 32       |
|               |       | Quadrato EasyMatt 18 cm | 4111780  | 18 x 18 x 17       |
|               |       | Quadrato EasyMatt 22 cm | 4111781  | 22 x 22 x 21       |
|               |       | Quadrato EasyMatt 25 cm | 4111782  | 25 x 25 x 24       |
|               |       | Quadrato EasyMatt 34 cm | 4111783  | 34 x 34 x 32       |

| Water (L) | Soil (L) | Weight netto (gr) | MOQ        | Quantity per EUR pallet (the height 195 cm) | Packaging Type | Carton size (mm) | Pcs carton |
|-----------|----------|-------------------|------------|---|----------------|------------------|------------|
| 4         | 14       | 1940              | 2          | 48  | carton         | 565 x 285 x 285  | 2          |
| 7         | 33       | 3290              | 2          | 30  | carton         | 705 x 355 x 355  | 2          |
| 6         | 12       | 3150              | 1          | 32  | carton         | 273 x 273 x 425  | 1          |
| 1,2       | 4        | 1052              | Contact us | 40  | carton         | 487 x 245 x 465  | 4          |
| 1,6       | 5,8      | 1560              | Contact us | 48  | carton         | 585 x 295 x 575  | 4          |
| 2,2       | 8,1      | 2104              | Contact us | 20  | carton         | 487 x 245 x 465  | 2          |
| 3,2       | 11,1     | 3120              | Contact us | 24  | carton         | 585 x 295 x 575  | 2          |
| 3         | 7        | -                 | 4          | 64  | carton         | 500 x 386 x 380  | 4          |
| 5         | 11       | -                 | 4          | 48  | carton         | 750 x 386 x 380  | 4          |
| 2         | 18       | 1818              | 3          | 54  | carton         | 328 x 328 x 469  | 3          |
| 3         | 21       | 2210              | 3          | 54  | carton         | 355 x 355 x 490  | 3          |
| 4         | 26       | 2811              | 3          | 54  | carton         | 400 x 400 x 524  | 3          |
| -         | 20       | 1462              | 3          | 54  | carton         | 328 x 328 x 469  | 3          |
| -         | 24       | 1828              | 3          | 54  | carton         | 355 x 355 x 490  | 3          |
| -         | 30       | 2184              | 3          | 54  | carton         | 400 x 400 x 524  | 3          |
| 1         | 3        | 383               | 8          | 336   | carton         | 360 x 360 x 260  | 8          |
| 1,7       | 5,4      | 598               | 6          | 120   | carton         | 750 x 250 x 300  | 6          |
| 2         | 7,8      | 910               | 6          | 120   | carton         | 750 x 250 x 300  | 6          |
| 4,1       | 23,9     | 1630              | 2          | 30  | carton         | 720 x 360 x 350  | 2          |
| -         | 3,25     | 280               | 12         | 504   | carton         | 360 x 360 x 260  | 12         |
| -         | 7,25     | 486               | 6          | 120   | carton         | 750 x 250 x 300  | 6          |
| -         | 10       | 670               | 6          | 120   | carton         | 750 x 250 x 300  | 6          |
| -         | 26       | 1466              | 2          | 30  | carton         | 720 x 360 x 350  | 2          |



FLOWER LOVER

# PRODUCTS

In today's market, you will find a very small number of producers of similar products. As far as competition goes, certain differences arise. The first and biggest difference is that you have to assemble the purchased product yourself at home, because it is sold in parts. Another difference is in the water level indicator, which is not integrated but protrudes like an antenna. There are often problems with small children breaking these protruding parts or pets destroying them. Then you have to buy spare parts that cost you extra. An equally important difference is that competing brands only include one funnel on the top part of the product. The problem occurs during watering when the product is hung at a greater height, causing water spills. For this reason, Plastkon has developed the Cobble with two holes, one at the top and the other on the side, into which the spout of a watering can fits perfectly.



**PLAYFUL**





FLOWER LOVER

# COBBLE

Today there is a growing trend to have fresh herbs available at home. Everyone wants to have organic and fresh ingredients at home when cooking. Under normal circumstances, when you buy herbs at the supermarket, they do not remain fresh or survive in the pot for very long and soon die without repotting. In case you decide to repot, other issues arise: By buying potting soil that is only sold in large 25 kg packages, you are likely to make a mess and spend time cleaning it up. That's why our company has developed this smart pot. It solves this fundamental problem by you simply buying a plant, placing it in the pot, we call it Plug & Play, and it is ready to use within 30 seconds.

The Cobble design features a combined matte and glossy surface for a modern look using laser engraving, which is very popular among our clients.





# Colours, sizes and sub-irrigation variations

## colors / materials

050    007    128



## sizes

Dimensions:  
14,5 × 14,5 × 14 cm  
Water: 0,6 L  
Soil: 1,2 L



Dimensions:  
40 × 14,5 × 14 cm  
Water: 1,4 L  
Zemina: 2,7 L



Dimensions:  
9 × 13,5 × 15 cm



## sub-irrigation system

Twist liner

for one grow pot  
(ø 10–12 cm)



for three grow pots  
(ø 10–12 cm)



# Properties

insert textile wicks



put a grow pot



convenient water filling from  
top and from the side



thanks to the holders, the  
pot can be hung anywhere



## accessories

textile wicks



on wall



on balcony



indoor/  
outdoor



fast  
installation



moisturizing  
wicks



weather  
resistant



no mess







FLOWER LOVER

# SUPREME EMBLEM

After some time, when your flower has withered and has to be replaced with a new one, repotting is necessary, and pots containing potting soil and the plant are often very heavy and difficult to repot. That's why we've developed removable inner containers that you just pull out by the handles, take to the garden and repot.

In order not to disturb the design of this product, the horizontal and fully integrated Hydro Power self-watering system was developed, which shows the water level and lets you know when to water the flower with the help of a float and the subsequent colour change from orange to green.

Supreme is adapted for both indoor and outdoor use, where you only need to open the drainage hole to drain excess rainwater.





# Colours, sizes and sub-irrigation variations

## colors / materials

007 128 050



## sizes

Dimensions:  
49,5 × 19 × 19 cm  
Water: 3 L  
Soil: 7 L



Dimensions:  
74,5 × 19 × 19 cm  
Water: 5 L  
Soil: 11 L

## sub-irrigation system

Hydro power

## sub-irrigation set with planter



## pattern



# Properties

specifically designed for  
using holders



the planters are removable for  
comfortable planting



convenient water  
filling



easy cleaning



indoor/  
outdoor



removable  
planters for  
easy planting



easy  
manipulation



weather  
resistant



no mess



rain water  
drain hole







FLOWER LOVER

# MUNGO

Mungo is a bowl specially designed for germination of seeds, nuts and pulses. You can grow your own fresh sprouts or young shoots in bio quality at home. The bowl is made up of three tiers which allow 3 different types of seeds to germinate at the same time. It's easy to use!





# Colours, sizes and sub-irrigation variations

## colors / materials

050 007 128 156



## sizes

Dimensions:  
17 × 17 × 15,5 cm  
Water: 0,5 L



## crops suitable for germination

mungo



lentils



weat



chickpeas



barley



oats



buckwheat



quinoa



millet



rice



corn



pepita



sunflower



hemp seed



brocoli



arugula



watercress



# Properties

Spread the seeds on the surface of the bowl.



Excess water will accumulate in the bottom bowl, which needs to be regularly emptied.



The beans or other seeds germinate on approximately day 2-3 after soaking. If you let them continue to grow, on day 5 they'll become small green plants - the so called microgreens.







FLOWER LOVER

# LARGO TRIO

Largo Trio, the large-volume window box is suitable for both indoor and outdoor use. It is the right choice for growing flowers, vegetables and climbing plants. Largo Trio also offers an elegant solution for dividing space and providing spacing between the visitors to restaurants, hotels and other public places. Largo Trio includes three independent containers so that you can grow three different plants at the same time. The individual containers can be easily removed from the box. The window box is integrated with a self-irrigation system, the watering hole and the water level indicator. If you wish not to keep water in the box, you can open the drainage outlet at the bottom of the container. Largo Trio is equipped with built-in castors for easy handling. Buy the unique vertical support for your window box which is particularly useful when growing tall plants such as tomatoes.





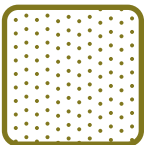
# Colours, sizes and sub-irrigation variations

## colors / materials

007 152



dull



## sizes

Dimensions:  
111 × 38 × 35,5 cm  
Water: 14 L  
Soil: 54 L



## sub-irrigation system

Separator

## accessories

vertical support



# Properties

the planters are removable  
for comfortable planting



convenient  
water filling



an elegant solution  
for dividing space



the unique vertical support  
for growing tall plants



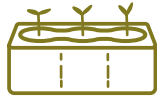
indoor/  
outdoor



pot for easy  
re-planting



space for  
three different  
plants



weather  
resistant



easy  
manipulation



rain water  
drain hole







FLOWER LOVER

# CUBICO

Perfect proportions that allow a wide range of uses. The beauty of CUBICA is enhanced by especially sharp edges that you simply will not find in competing brands. Small, medium, large cubes – you watch them and want to play. Enjoy the pleasure of your own creativity. Enliven your apartment with a self-watering pot featuring a shiny finish. It does not have a drain valve and is therefore primarily intended for indoor use. A self-watering set comprising a grate that separates the soil from the water reservoir, a filling tube with a level indicator.





# Colours, sizes and sub-irrigation variations

## colors / materials

050

051

052

049



## sizes

Small Liner

Dimensions:  
9 × 9 × 9 cm  
Water: 0,15 L  
Soil: 0,5 L

Small Liner

Dimensions:  
9 × 9 × 13 cm  
Water: 0,4 L  
Soil: 0,5 L

Small Liner

Dimensions:  
14 × 14 × 14 cm  
Water: 0,38 L  
Soil: 2,25 L

Separator

Dimensions:  
21 × 21 × 21 cm  
Water: 2,4 L  
Soil: 5,6 L

Separator

Dimensions:  
21 × 42 × 21 cm  
Water: 4,8 L  
Soil: 11,2 L

## sub-irrigation system

Separator

Small liner

# Properties

glossy design

Convenient water filling

for the beauty of each leaf and flower

various combinations

indoor

comfort design

easy manipulation

high volume

variability





FLOWER LOVER

# QUADRATO

## QUADRATO

The simple and delicate shapes will beautifully complement your interior. Its design provides a large volume for the plant while saving space. These pots come in a shiny finish. It does not have a drain valve and is therefore primarily intended for indoor use. The set includes a decorative pot and a self-watering set including a separator that separates the soil from the water tank, a filling tube and a water level indicator.

## QUADRATO EASY

These pots come in a shiny finish. They do not have a drainage valve and are therefore primarily intended for indoor use. The self-watering set is not included. It can be purchased separately as an accessory.





# Colours, sizes and sub-irrigation variations

## colors / materials

### QUADRATO



### QUADRATO EASY



## sizes

### QUADRATO

Dimensions:  
18 × 18 × 17 cm  
Water: 1 L  
Soil: 3 L



Dimensions:  
22 × 22 × 21 cm  
Water: 1,7 L  
Soil: 5,4 L



Dimensions:  
25 × 25 × 24 cm  
Water: 2 L  
Soil: 7,8 L



Dimensions:  
34 × 34 × 32 cm  
Water: 4,1 L  
Soil: 23,9 L



Dimensions:  
18 × 18 × 33 cm  
Water: 0,9 L  
Soil: 2,6 L



Dimensions:  
22 × 22 × 41 cm  
Water: 1 L  
Soil: 5 L



### QUADRATO EASY

Dimensions:  
18 × 18 × 17 cm  
Soil: 3,25 L



Dimensions:  
22 × 22 × 21 cm  
Soil: 7,25 L



Dimensions:  
25 × 25 × 24 cm  
Soil: 10 L



Dimensions:  
34 × 34 × 32 cm  
Soil: 26 L

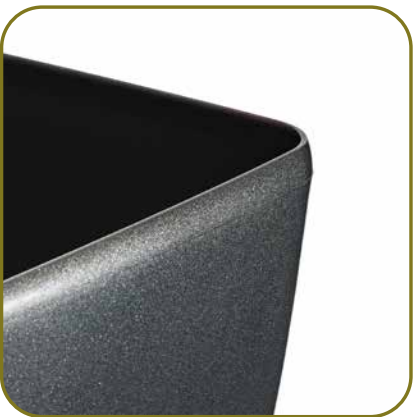


# Properties

convenient water filling



glossy design



sub-irrigation system

### QUADRATO

Separator

Separator High

### QUADRATO EASY

Without sub-irrigation

## accessories

self-watering system



indoor



comfort design



easy manipulation



high volume  
(without sub-irrigation)





FLOWER LOVER

# POINT OF SALE DISPLAYS

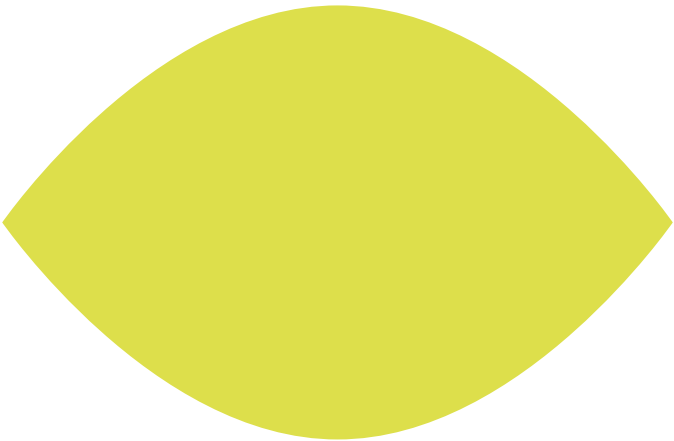
We offer above-standard packaging services that we are able to implement according to your requirements. Product itself, but also its presentation should stand out from the series. Attractive and interesting packaging significantly support the customer's purchase decision.



**VISIBILITY**



# We will help you with the sale and presentation of a product



Stands with your own print can be specially.

You can display the product displays immediately in your store.



Customers can view products from all sides.

Displays save shelf space.





# Logistics overview

| Product        | Color   | Name                               | Art. No.   | Dimensions (cm)   |
|----------------|---|------------------------------------|------------|-------------------|
| COBBLE         | <div><div>050</div><div>007</div><div>128</div></div>               | Cobble 14 cm                       | 4114029    | 14,5 × 14,5 × 14  |
|                |   | Cobble trio                        | 4114031    | 40 × 14,5 × 14    |
|                |   | Cobble držák                       | 4110494095 | 9 × 13,5 × 15     |
|                |   | Spare wicks for Cobble (set 4 ks)  | 4114200    | 10 × 17 × 1,5     |
| SUPREME EMBLEM | <div><div>050</div><div>007</div><div>128</div></div>               | Supreme                            | 411128     | 49,5 × 19 × 19    |
|                |   |                                    | 411129     | 74,5 × 19 × 19    |
| QUADRATO       | <div><div>055</div><div>007</div><div>054</div><div>017</div></div> | Quadrato                           | 4111661    | 18 × 18 × 17      |
|                |   |                                    | 4111662    | 22 × 22 × 21      |
|                |   |                                    | 4111663    | 25 × 25 × 24      |
|                |   |                                    | 4111664    | 34 × 34 × 32      |
|                |   |                                    | 4111665    | 18 × 18 × 33      |
|                |   |                                    | 4111666    | 22 × 22 × 41      |
|                | <div><div>055</div><div>007</div><div>054</div><div>017</div></div> | Quadrato Easy                      | 4111661055 | 18 × 18 × 17      |
|                |   |                                    | 4111662055 | 22 × 22 × 21      |
|                |   |                                    | 4111663055 | 25 × 25 × 24      |
|                |   |                                    | 4111664055 | 34 × 34 × 32      |
|                | <div><div>005</div></div>   | Quadrato Easy Self-watering system | 4111715    | 15 × 15 × 5,2     |
|                |   |                                    | 4111716    | 18,2 × 18,2 × 5,5 |
|                |   |                                    | 4111717    | 20,5 × 20,5 × 5,8 |
|                |   |                                    | 4111718    | 27,2 × 27,2 × 6,2 |
| CUBICO         | <div><div>050</div><div>052</div><div>049</div><div>051</div></div> | Cubico                             | 4111800    | 9 × 9 × 9         |
|                |   |                                    | 4111801    | 9 × 9 × 13        |
|                |   |                                    | 4111803    | 14 × 14 × 14      |
|                |   |                                    | 4111805    | 21 × 21 × 21      |
|                |   |                                    | 4111807    | 21 × 42 × 21      |

| Water (L) | Soil (L) | Weight netto (gr) | MOQ | Quantity per EUR pallet (the height 195 cm) | Packaging Type | Carton size (mm) | Pcs carton |
|-----------|----------|-------------------|-----|---|----------------|------------------|------------|
| 0,6       | 1,2      | 325               | 8   | 384   | carton         | 300 × 295 × 275  | 8          |
| 1,4       | 2,7      | 780               | 4   | 144   | carton         | 397 × 293 × 280  | 4          |
| -         | -        | 86                | 6   | 960   | carton         | 280 × 177 × 145  | 6          |
| -         | -        | 14                | 10  | 160   | carton         | 280 × 177 × 145  | 10         |
| 3         | 7        | 2260              | 4   | 64  | carton         | 500 × 386 × 380  | 4          |
| 5         | 11       | 3184              | 4   | 48  | carton         | 750 × 386 × 380  | 4          |
| 1         | 3        | 383               | 8   | 336   | carton         | 360 × 360 × 260  | 8          |
| 1,7       | 5,4      | 598               | 6   | 120   | carton         | 750 × 250 × 300  | 6          |
| 2         | 7,8      | 598               | 6   | 120   | carton         | 750 × 250 × 300  | 6          |
| 4,1       | 23,9     | 1630              | 2   | 30  | carton         | 720 × 360 × 350  | 2          |
| 0,9       | 2,6      | 1030              | 6   | 96  | carton         | 600 × 400 × 380  | 6          |
| 1         | 5        | 1550              | 3   | 48  | carton         | 750 × 250 × 300  | 3          |
| -         | 3,25     | 280               | 12  | 504   | carton         | 360 × 360 × 260  | 12         |
| -         | 7,25     | 486               | 6   | 120   | carton         | 750 × 250 × 300  | 6          |
| -         | 10       | 670               | 6   | 120   | carton         | 750 × 250 × 300  | 6          |
| -         | 26       | 1466              | 2   | 30  | carton         | 720 × 360 × 350  | 2          |
| 1         | -        | 96                | 24  | 768   | carton         | 600 × 400 × 200  | 24         |
| 1,7       | -        | 142               | 18  | 576   | carton         | 600 × 400 × 201  | 18         |
| 2         | -        | 220               | 12  | 384   | carton         | 600 × 400 × 202  | 12         |
| 4,1       | -        | 330               | 6   | 192   | carton         | 600 × 400 × 203  | 6          |
| 0,15      | 0,5      | 171               | 12  | 1632  | carton         | 385 × 280 × 93   | 12         |
| 0,4       | 0,5      | 230               | 8   | 1088  | carton         | 385 × 280 × 93   | 8          |
| 0,38      | 2,25     | 255               | 16  | 384   | carton         | 565 × 285 × 285  | 16         |
| 2,4       | 5,6      | 1470              | 2   | 120   | carton         | 440 × 220 × 220  | 2          |
| 4,8       | 11,2     | 2130              | 1   | 60  | carton         | 440 × 220 × 220  | 1          |



# Logistics overview

| Produkt               | Barva           | Název                 | Art. Č.    | Velikost (cm)     |
|-----------------------|-----------------|-----------------------|------------|-------------------|
| MUNGO                 | 050 007 128 156 | Mungo                 | 4110805    | 17 × 17 × 15,5    |
| LARGO TRIO            | 007 152         | Largo Trio            | 4114098    | 111 × 38 × 35,5   |
| GREEN WALL LARGO TRIO | 128             | Green Wall Largo Trio | 4114126000 | 57,5 × 23,5 × 5,5 |

| Voda (L) | Zemina (L) | Netto váha (gr) | Min. objednávací množství | Množství ks EUR paleta (výška 195 cm) | Typ balení | Rozměr kartonu (mm) | Ks v kartonu |
|----------|------------|-----------------|---------------------------|---------------------------------------|------------|---------------------|--------------|
| 0,5      | -          | 368             | 6                         | 192                                   | carton     | 600 × 400 × 200     | 6            |
| 14       | 54         | 7190            | 8                         | 8                                     | In bulk    | -                   | -            |
| -        | -          | 990             | 9                         | 144                                   | carton     | 600 × 400 × 380     | 9            |

# List of color

|                  |                        |                         |
|------------------|------------------------|-------------------------|
| 005 Black        | 050 Ice White          | 055 Crystal White       |
| 007 Antracite    | 051 Elegant Red        | 128 Stone Gray          |
| 017 Red          | 052 Magnificent Purple | 152 Antracit+Stone Gray |
| 049 Glossy Black | 054 Glossy Black       | 156 Avocado             |



FLOWER LOVER

# CONTACT US TODAY

## HEADQUARTERS AND FACTORY

Plastkon product s.r.o.  
Hlavní 147  
790 84 Mikulovic  
Czech Republic  
info@plastkon.cz

## GLOBAL SALES AND MARKETING

WorkLounge — Forum Karlín  
Pernerova 51  
186 00 Prague

Jiří Chvojka  
Tel.: +420 770 134 889  
jiri.chvojka@plastkon.cz

David Hama  
Tel.: +420 603 803 779  
sales@plastkon.cz

Markéta Puzrlova  
Tel.: +420 778 971 152  
marketa.puzrlova@plastkon.cz

Thomas Brussmann  
Tel.: +49 (0) 163 879 784 4  
thomas.brussmann@plastkon.de

## CZECH AND SLOVAK SALES

Bohunická 69  
619 00 Brno  
Czech Republic

Ing. Petr Stejskal  
Tel.: +420 604 223 556  
petr.stejskal@plastkon.cz

Ing. Jaroslav Ševčík  
Tel.: +420 603 711 887  
jaroslav.sevcik@plastkon.cz

## PLASTKON NORDICS

Pål Stensland  
Ringsveien 6C  
1368 Stabekk  
Norway  
Tel.: +47 9346 6573  
paal.stensland@plastkon.eu

Updated: 5. 4. 2024

## PLASTKON GERMANY, AUSTRIA, SWITZERLAND

Thomas Brussmann  
Ludwigstraße 19, D-67227  
Frankenthal  
Tel.: +49 (0) 163 8797844  
thomas.brussmann@plastkon.de

## PLASTKON FRANCE & BENELUX

Ann Nuyten  
Europaplein 1  
B-3360 Bierbeek  
Belgium  
Tel.: +32 475 41 61 20  
ann.nuyten@plastkon.eu

## PLASTKON BRANDS

 **FLOWER LOVER**  
www.flowerlover.eu

 **GARDENICO**  
www.gardenico.com

 **GIZMO RIDERS**  
www.gizmoriders.com

 **ARMSTRONG**  
www.getarmstrong.com

 **SNOWFLAKE**

 **HABITAO**

 **SNOW SHOVELS**

 **GARDENICO Kids**

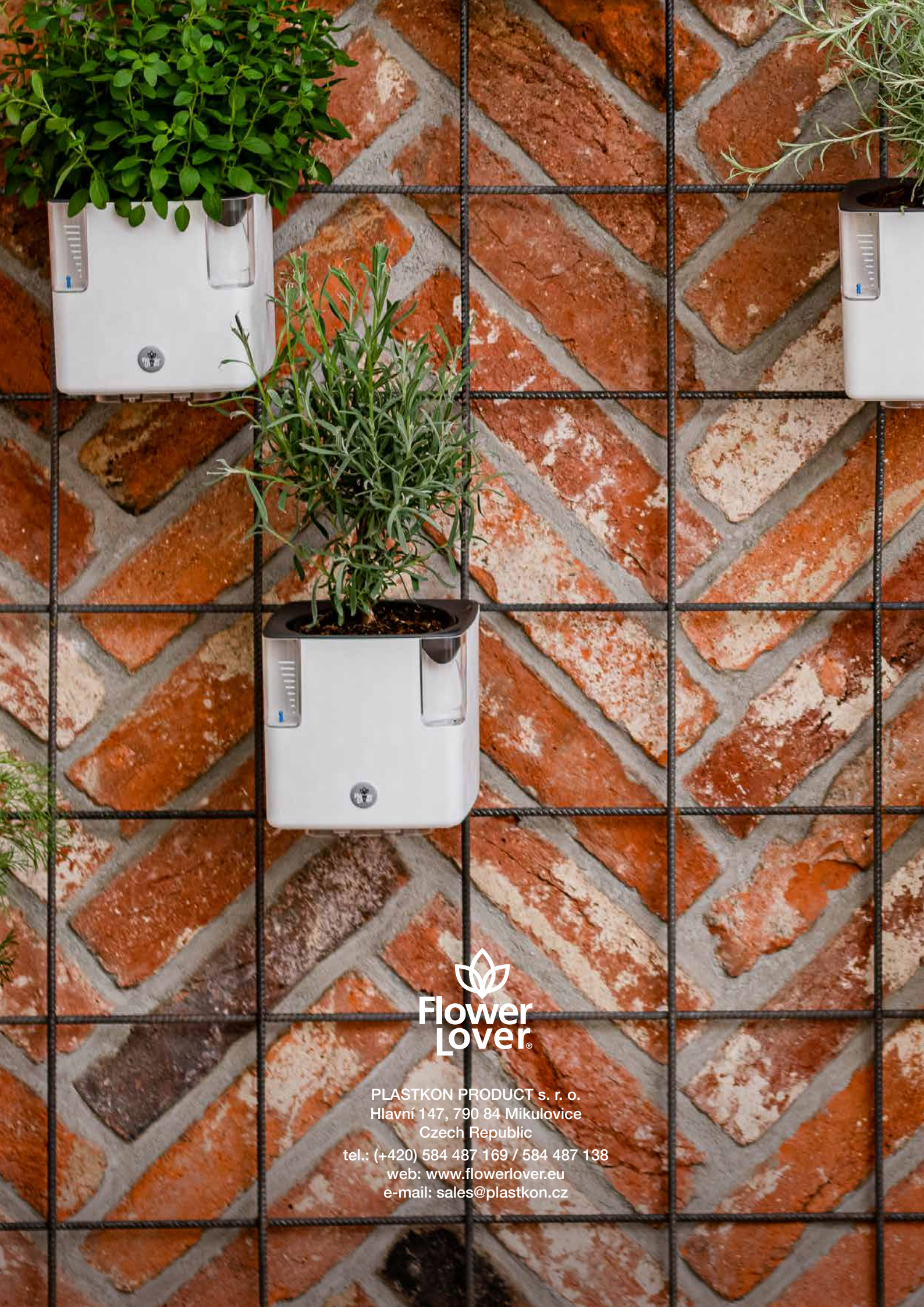
## PLASTKON SOCIAL MEDIA

linkedin.com/company/plastkon-product-s-r-o-/  
facebook.com/plastkon  
instagram.com/plastkon  
pinterest.com/plastkon

**DOWNLOAD ASSETS**  
media.plastkon.cz

 **Flower  
Lover®**





PLASTKON PRODUCT s. r. o.  
Hlavní 147, 790 84 Mikulovice  
Czech Republic  
tel.: (+420) 584 487 169 / 584 487 138  
web: [www.flowerlover.eu](http://www.flowerlover.eu)  
e-mail: [sales@plastkon.cz](mailto:sales@plastkon.cz)